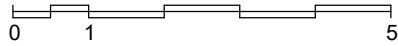
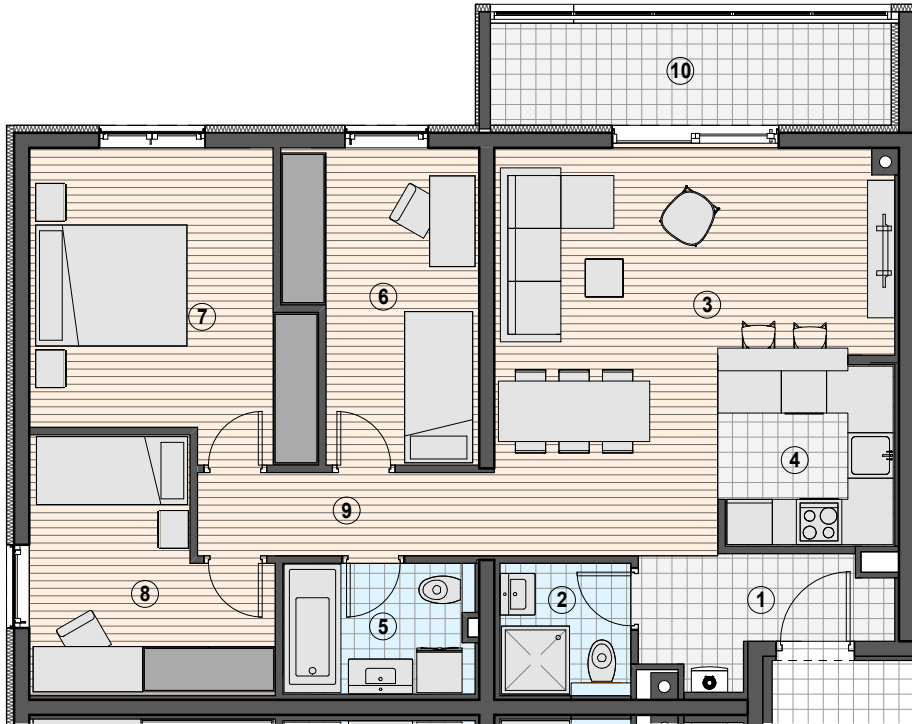


# STAMBENO POSLOVNA ZGRADA\_ KAŠTANJER\_PULA



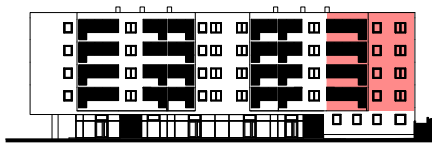
## KATALOG STANOVA



### NETO KORISNE POVRŠINE 3-SOBNI STAN

	NKP
1 ULAZNI HODNIK	4.61 m <sup>2</sup>
2 KUPAONICA	3.08 m <sup>2</sup>
3 DB/ BLAGOVAONICA	22.49 m <sup>2</sup>
4 KUHINJA	5.79 m <sup>2</sup>
5 KUPAONICA	4.45 m <sup>2</sup>
6 SPAVAČA SOBA	9.74 m <sup>2</sup>
7 SPAVAČA SOBA	13.63 m <sup>2</sup>
8 SPAVAČA SOBA	9.49 m <sup>2</sup>
9 HODNIK	4.32 m <sup>2</sup>
10 LOĐA*	5.37 m <sup>2</sup>
<b>UKUPNO</b>	<b>82.96 m<sup>2</sup></b>

\* stvarna površina lođe 7,16 m<sup>2</sup>



### OZNAKA NEKRETNINE

**A101.1**  
**A201.1**  
**A301.1**  
**A401.1**

