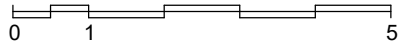
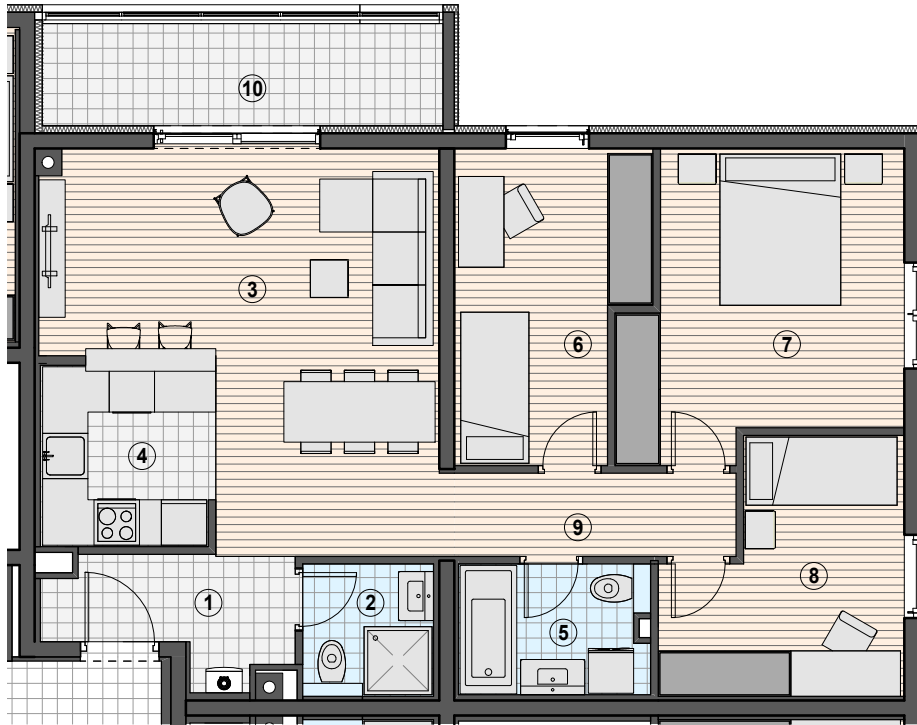


STAMBENO POSLOVNA ZGRADA_ KAŠTANJER_PULA



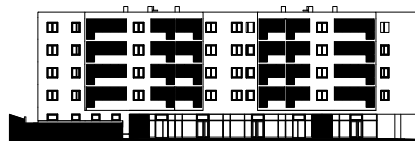
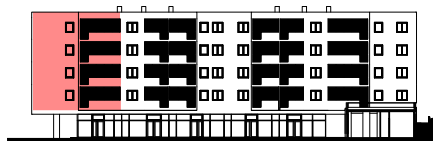
KATALOG STANOVA



NETO KORISNE POVRŠINE 3-SOBNI STAN

	NKP
1 ULAZNI HODNIK	4.61 m ²
2 KUPAONICA	3.08 m ²
3 DB/ BLAGOVAONICA	22.49 m ²
4 KUHINJA	5.79 m ²
5 KUPAONICA	4.45 m ²
6 SPAVAČA SOBA	9.74 m ²
7 SPAVAČA SOBA	13.63 m ²
8 SPAVAČA SOBA	9.49 m ²
9 HODNIK	4.32 m ²
10 LOĐA*	5.37 m ²
UKUPNO	82.96 m²

* stvarna površina lođe 7,16 m²



OZNAKA NEKRETNINE

D106.1
D206.1
D306.1
D406.1

