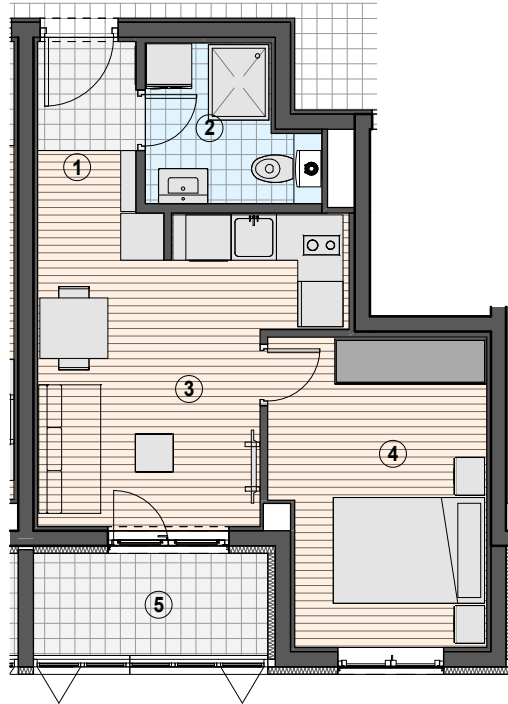


STAMBENO POSLOVNA ZGRADA_ KAŠTANJER_PULA



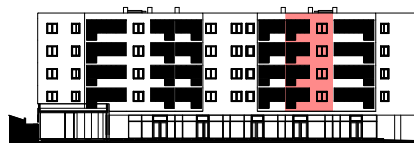
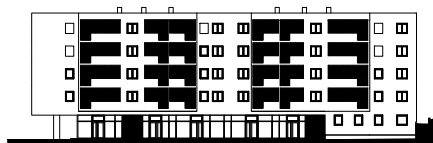
KATALOG STANOVA



NETO KORISNE POVRŠINE 1-SOBNI STAN

	NKP
1 ULAZNI HODNIK	4.22 m ²
2 KUPAONICA	4.03 m ²
3 DB/BLAGOVANICA/ KUHINJA	13.38 m ²
4 SPAVAČA SOBA	11.78 m ²
5 LOĐA*	3.14 m ²
	36.56 m ²

* stvarna površina lođe 4.19 m²



OZNAKA NEKRETNINE

B105.3
B205.3
B305.3
B405.3

