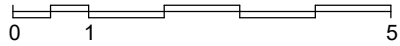
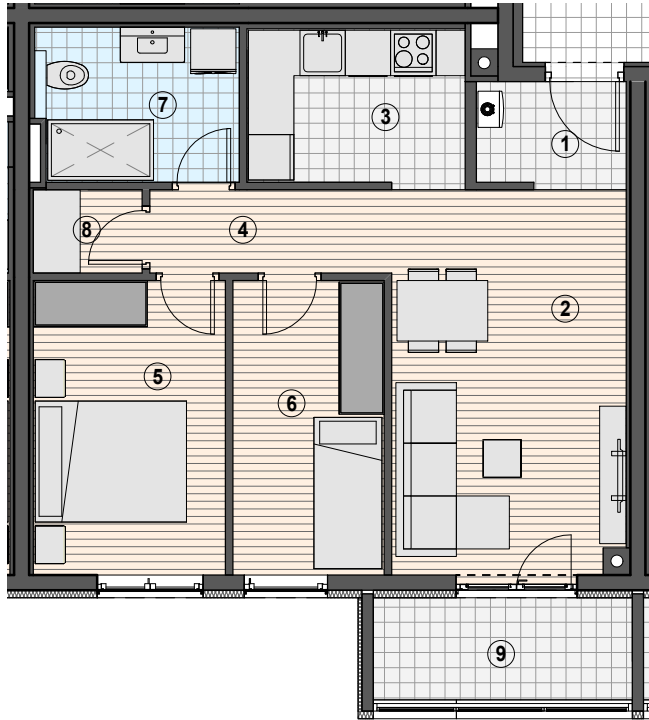


STAMBENO POSLOVNA ZGRADA_ KAŠTANJER_PULA



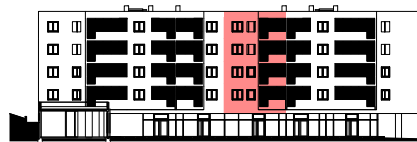
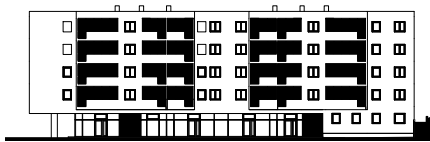
KATALOG STANOVA



NETO KORISNE POVRŠINE 2-SOBNI STAN

	NKP
1 ULAZNI HODNIK	2.83 m ²
2 DB/BLAGOVAONICA	15.95 m ²
3 KUHINJA	6.17 m ²
4 HODNIK	3.52 m ²
5 SPAVAČA SOBA	10.11 m ²
6 SPAVAČA SOBA	7.79 m ²
7 KUPAONICA	5.46 m ²
8 IZBA	1.64 m ²
9 LOĐA*	3.47 m ²
UKUPNO	56.94 m²

* stvarna površina lođe 4.62 m²



OZNAKA NEKRETNINE

B104.5
B204.5
B304.5
B404.5

